

## TEN YEAR WORK PLANS – with winter works highlighted in blue, summer in yellow

### Compartment 1

	Priority	2019	2020	2021	2022	2023	2024	2025	2026	2027	2028	Notes
1.1 Mow grassland and remove arisings	High	Aug	Aug	Aug	Aug	Aug	Aug	Aug	Aug	Aug	Aug	BCC
1.2 Clear bramble/scrub from the bank that runs north to south across compartment	Moderate		Sept			Sept			Sept			BCC Parks Ops
1.3 Clear back edge of bramble, reducing by 2m-4m to a depth of bramble of no more than 2 metres from the tree line on the west boundaries	Moderate			Sept			Sept			Sept		BCC Parks Ops
1.4 Flail hedge to current height and width (height after flail level with top of fence, 1.3m measured from inside the Local Nature Reserve, width 2.5m)	High	Winter									BCC Parks Ops	

### Compartment 2

	Priority	2019	2020	2021	2022	2023	2024	2025	2026	2027	2028	Notes
2.1 Clear all tree saplings and seedlings	High	As they appear (Summer)									Volunteers	
2.2 Inspect, maintain and repair chimney	High	As necessary									BCC Properties	

### Compartment 3

	Priority	2019	2020	2021	2022	2023	2024	2025	2026	2027	2028	Notes
3.1 Reduce depth of larger bramble patches by 2m to 3m to a depth of no more than 2 metres from the tree line	Moderate	Nov		Nov		Nov		Nov		Nov		BCC Parks Ops
3.2 Remove tree and shrub saplings from grassland and continue to keep existing area of grassland clear.	High	As they appear (Summer)									BCC Parks Ops & volunteers	
3.3 Cut bramble back from path edges by at least 2m	High	Winter									BCC Parks Ops	
3.4 Keep brambles at least 2 metres back from path	High	Aug										

#### Compartment 4

	Priority	2019	2020	2021	2022	2023	2024	2025	2026	2027	2028	Notes
4.1 Monitor for return of Japanese knotweed	High	June										Volunteers
4.2 Treat any Japanese knotweed	High	June-Sept										BCC Contractors
4.3 Flail scrub (not done 2018)	Moderate		Oct			Oct			Oct			BCC Park Ops
4.4 Reduce dogwood to half current extent by digging out	Low		Feb									Volunteers
4.5 Cut 50% dogwood stems to near ground level in rotation	Moderate	End of Winter										BCC Park Ops

#### Compartment 5

	Priority	2019	2020	2021	2022	2023	2024	2025	2026	2027	2028	Notes
5.1 Cut or uproot smaller broom plants	High	All year round*										Volunteers
5.2 Clear all, scrub, tree saplings, seedlings and most broom	High	Sept	Sept	Sept								BCC Park Ops
5.3 Cut regrowth as necessary	High			June	June	June			June			Volunteers

#### Compartment 6

	Priority	2019	2020	2021	2022	2023	2024	2025	2026	2027	2028	Notes
6.1 In rotation cut 50% tall herb, scrub and tree saplings east of main path	Moderate	Winter										Volunteers (ParkWork)
6.2 Cut all tall herbs and scrub in north section of compartment 6 enclosing the "V" of the path that comes down from the Hill and the path that goes west into the woodland.	High	Winter										Parks Ops
6.3 Keep woodland 3-4 metres from path edges	High	Winter										Park Ops
6.4 Clear all patches of scrub and tree saplings in grassland not addressed by 6.1-6.3	Moderate	Nov		Nov		Nov		Nov		Nov		Volunteers

### Compartment 7

	Priority	2019	2020	2021	2022	2023	2024	2025	2026	2027	2028	Notes
7.1 Clear woodland edge to a width of between 5m & 7m	High	Dec			Dec			Dec			Dec	Contractors
7.2 Cut scrub and tree saplings across area	High	All year round*										Volunteers
7.3 Remove smaller oaks, trim back lower limbs of larger oak	Moderate	Dec				Dec				Dec		Contractors

### Compartment 8

	Priority	2019	2020	2021	2022	2023	2024	2025	2026	2027	2028	Notes
8.1 Remove encroaching broom and other scrub	High			Sept				Sept				Contractor
8.2 Repeat scrub removal	High	As necessary										Volunteers

### Compartment 9

	Priority	2019	2020	2021	2022	2023	2024	2025	2026	2027	2028	Notes
9.1 Remove encroaching trees from scrub	Low			Jan				Jan				Contractors
9.2 Clear a strip 2m-3m wide of scrub and trees to both sides of path	Moderate	Dec						Dec				Contractors/volunteers
9.3 Repeat clearance along path	Moderate			Winter					Winter			BCC Parks Ops
9.4 Maintain steps	High	As necessary										Volunteers / BCC
9.5 Inspect, maintain and repair listed structure	High	As necessary										BCC Properties
9.6 Cut bracken along edge of woodland that bounds Troopers Hill Rd	High	June and early August										BCC

## Compartment 10

	Priority	2019	2020	2021	2022	2023	2024	2025	2026	2027	2028	Notes
10.1 Fell broom and gorse progressively, starting from western and south-eastern edges of area	Moderate		Sept		Sept			Sept			Sept	Contractors
10.2 Cut regrowth	Moderate				June		June			June		Contractors/volunteers
10.3 Repeat clearance	Moderate					Aug			Aug			Volunteers
10.4 Monitor Himalayan balsam and remove if necessary	High	June									Volunteers	
10.5 Cut bracken on slope ascending south boundary of compartment – <i>not done 2019</i>	High	June and early August									BCC Park Ops	
10.6 Cut or pull bracken growing through heather and in other areas unsuitable for Parks cutting equipment	High	June and early August									Volunteers	
10.7 Cut area where Himalayan balsam has been found so volunteers can access it to inspect and if necessary remove Himalayan balsam in June This plateau area also gives access to the base of slopes to compartment 15 allowing control of scrub on those slopes.	High	Winter									BCC Park Ops	

## Compartment 11

	Priority	2019	2020	2021	2022	2023	2024	2025	2026	2027	2028	Notes
11.1 Cut bracken	High	June & early August									BCC Parks Ops	
11.2 Cut or pull bracken growing through heather and in other areas unsuitable for Parks cutting equipment	High	June & early August									Volunteers	
11.3 Clear broom	High	Feb			Feb			Feb			Feb	Volunteers
11.4 Remove saplings scrub by pulling and cutting	High	Summer									Volunteers	

## Compartment 12

	Priority	2019	2020	2021	2022	2023	2024	2025	2026	2027	2028	Notes
12.1 Remove all gorse, broom, scrub, tree saplings and seedlings by pulling and cutting	High	Summer										Volunteers
12.2 Remove all scrub from south section of compartment below path parallel with Troopers Hill Rd as part of winter works.	High	Winter										BCC Parks Ops

## Compartment 13

	Priority	2019	2020	2021	2022	2023	2024	2025	2026	2027	2028	Notes
13.1 Remove trees and scrub	High		Winter			Winter			Winter			BCC Parks Ops
13.2 Remove saplings, retain rowan	High	Summer										Volunteers
13.3 Clear scrub from rock exposure	High				Oct					Oct		Volunteers
13.4 Cut tall herbs, bracken etc on lower areas of rock exposures	High	July			July			July			July	BCC Park Ops
13.5 Cut bracken in accessible areas	High	June & early August										BCC Park Ops
13.6 Cut or pull bracken growing through heather and in other inaccessible areas	High	June & early August										Volunteers
13.7 Remove ivy from rock faces	Moderate		Oct			Oct			Oct			Volunteers
13.8 Cut scrub on mound on gulley floor to west of desire line path coming down from south-facing slope	Moderate	Winter										BCC Park Ops

## Compartment 14

	Priority	2019	2020	2021	2022	2023	2024	2025	2026	2027	2028	Notes
14.1 Remove tree seedlings and saplings	Moderate				Sept					Sept		Volunteers
14.2 Cut and maintain a "firebreak" into the bramble growing into the borders of compartment 13 and 15	High		Dec									Volunteers
14.3 Maintain small area of bramble for birds	Moderate	Winter										Volunteers
14.4 Keep oak stumps clear of overgrowth to allow access to continue for natural play.	Moderate	Winter										Volunteers

## Compartment 15

	Priority	2019	2020	2021	2022	2023	2024	2025	2026	2027	2028	Notes
15.1 Remove trees and scrub as per map 14	Moderate		Dec			Dec						Contractors
15.2 Remove trees growing through scrub locations as per map 14	Moderate			Dec								Contractors
15.3 Remove trees and scrub locations as per map 14	High				Dec							Contractors
15.4 Flail scrub patches locations as per map 14	Moderate	Dec				Dec						BCC
15.5 Cut accessible patches of bracken	High	June and early August									BCC	
15.6 Hand pull or cut bracken from heather and broom on edges of areas cut by BCC	High	June and early August									Volunteers	
15.7 Cut scrub on western side of valley as per map 14	High			Sept				Sept				BCC
15.8 Cut scrub on eastern side of valley as per map 14	High					Sept				Sept		BCC
15.9 Remove scrub from mounds on north edge of compartment 15 from the western edge to the specimen birch tree on the north east side of compartment 15	High	Winter									BCC Park Ops	
15.10 Prevent further spread of gorse and scrub by removing new growth	High	Summer									Contractors/Volunteers	
15.11 Keep flat areas at top of gully clear of scrub	High	Summer									Contractors/Volunteers	
15.12 Progressive clearance of gorse continuing from compartment 10	Moderate		Sept		Sept		Sept		Sept		Sept	Contractors
15.13 Cut route from specimen oak on southeast boundary northwest to specimen birch	High	Winter									BCC Park Ops/volunteers	

## Compartment 16

	Priority	2019	2020	2021	2022	2023	2024	2025	2026	2027	2028	Notes
16.1 Monitor spoil from badger sett on road	High	All									Volunteers	
16.2 Remove spoil from road	High	As necessary									BCC Highways	
16.3 Monitor trees on road edges for safety and contact the arboricultural team for advice and possible action	High	All									Volunteers/ BCC Parks Arboricultural team	

## Compartment 17

	Priority	2019	2020	2021	2022	2023	2024	2025	2026	2027	2028	Notes
17.1 Strim vegetation throughout compartment	Medium	Feb & Sept	Feb & Sept	Feb & Sept	Feb & Sept	Feb & Sept	Feb & Sept	Feb & Sept	Feb & Sept	Feb & Sept	Feb & Sept	BCC Park Ops

## All Compartments

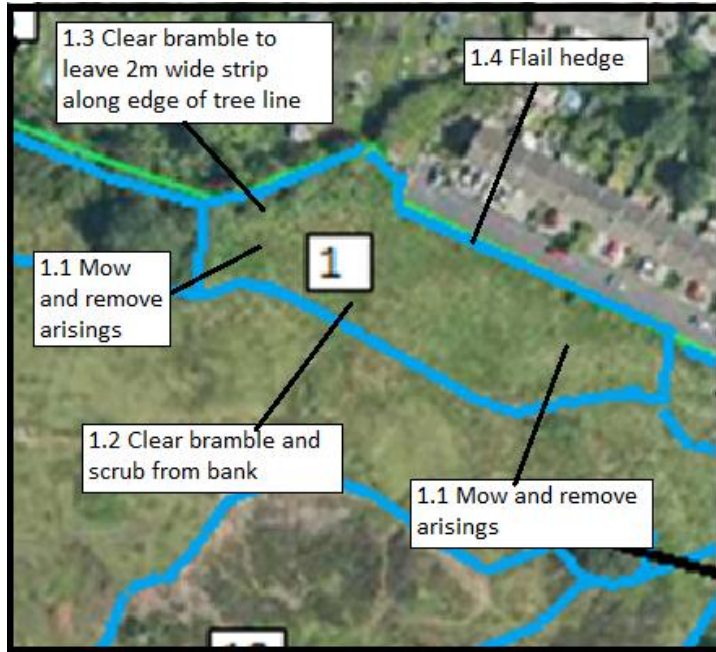
	Priority	2019	2020	2021	2022	2023	2024	2025	2026	2027	2028	Notes
A.1 Keep all paths clear of overgrowth and cut back by 2m on either side	High	As necessary										Volunteers / BCC
A.2 Carry out invertebrate survey	High	Apr-Aug					Apr-Aug					Consultant
A.3 Repeat photographic monitoring	High			Sept					Sept			Consultant
A.4 Repeat vegetation survey	Moderate					Apr-Aug						Consultant
A.5 Hold annual meeting to discuss winter works	High	November										Volunteers / BCC
A.6 Litter pick	High	As necessary										Volunteers
A7. Keep all entrances clear of vegetation with good sightlines	High	As necessary										BCC Park Ops/volunteers
A8. Remove holm oak where easily accessible, but cutting or uprooting.	High	As necessary										Volunteers

\* Where an activity is shown as all year round, if there is a dense area of scrub where there might be bird nesting then the activity will only take place outside the bird nesting season or a protocol has been agreed with the BCC's conservation officer

Summer – where tasks are described as summer activities they will not impact bird nesting but can also be done in winter

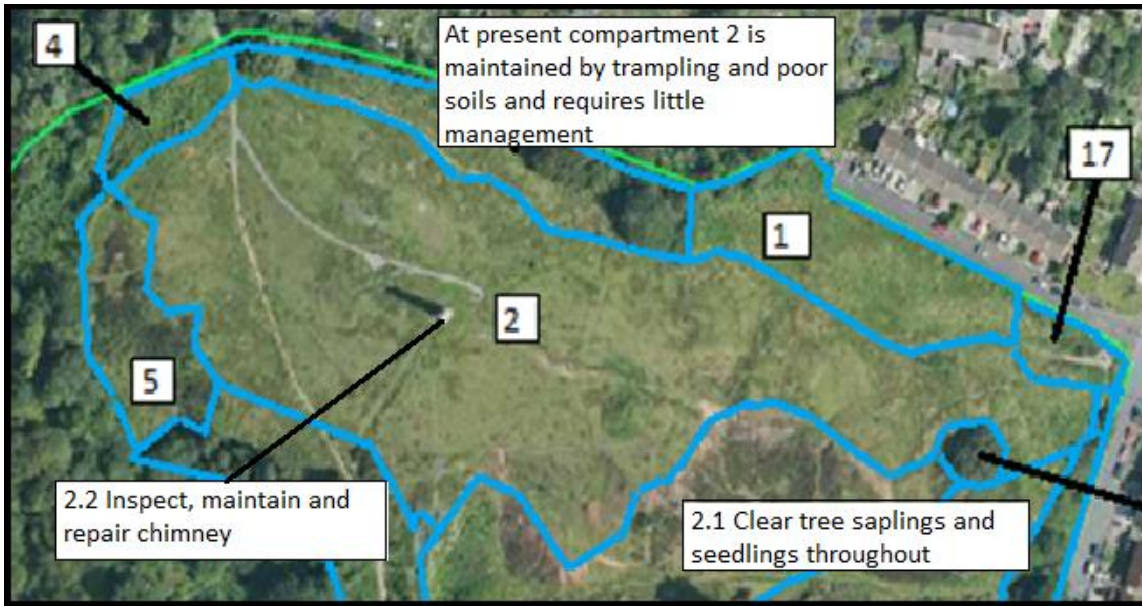
Winter – where tasks are shown as winter activities, they cannot take place in the bird nesting season. These are shown highlighted in blue

Bracken cutting has been shown highlighted in yellow.

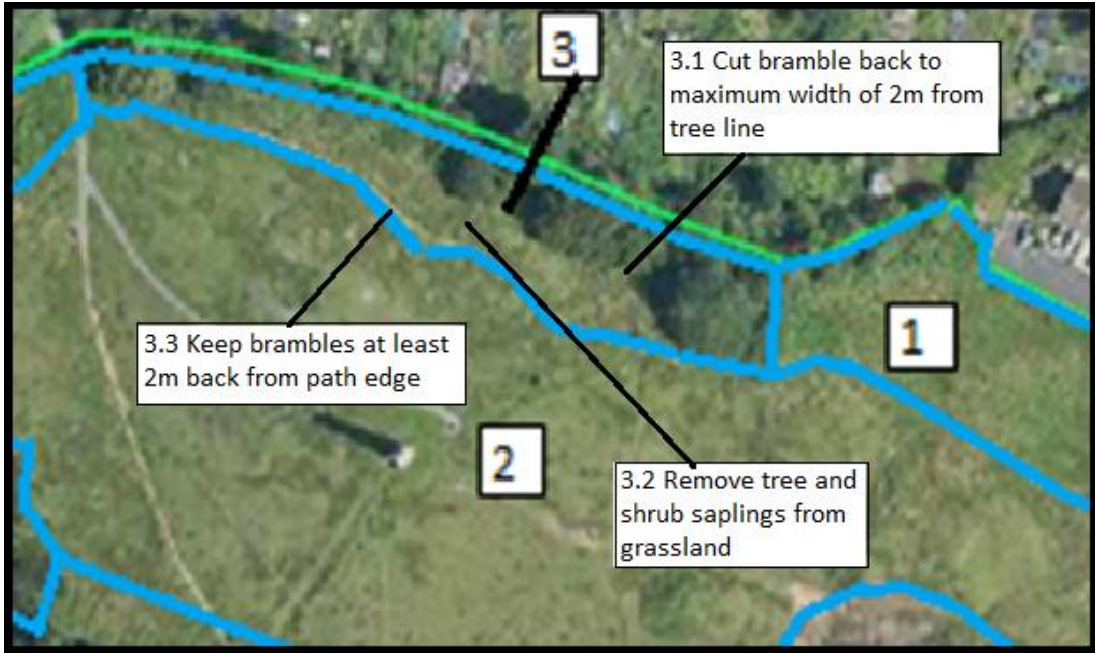


Map 1: Compartment 1 Management Proposals

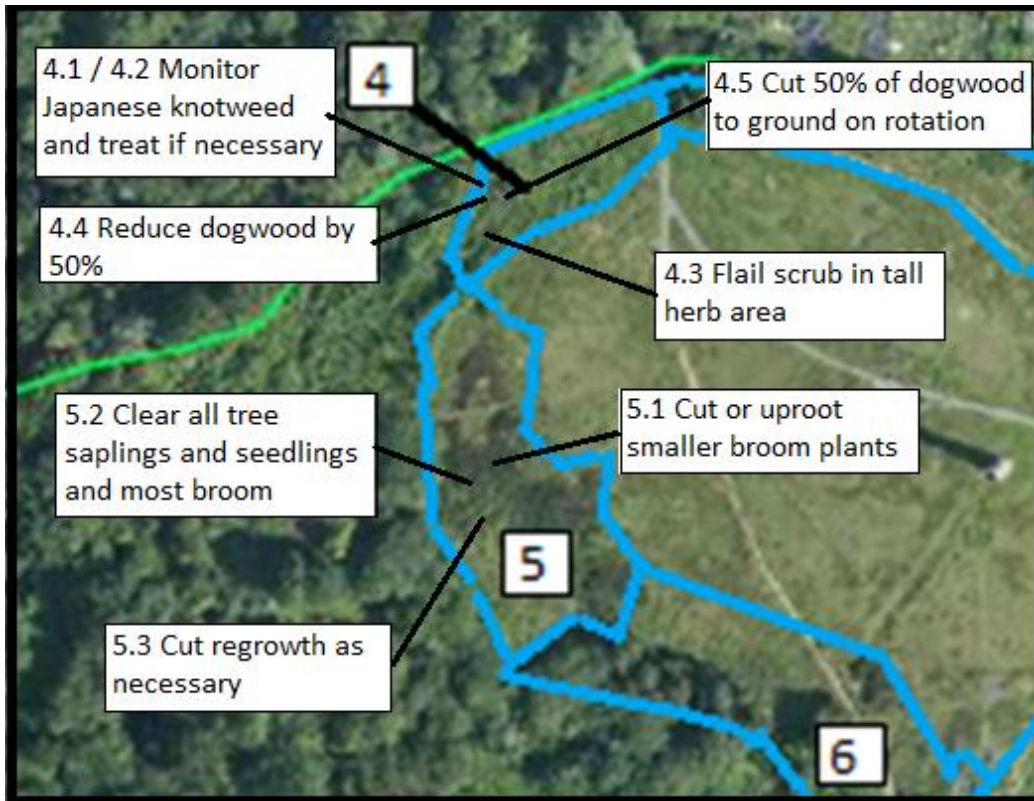




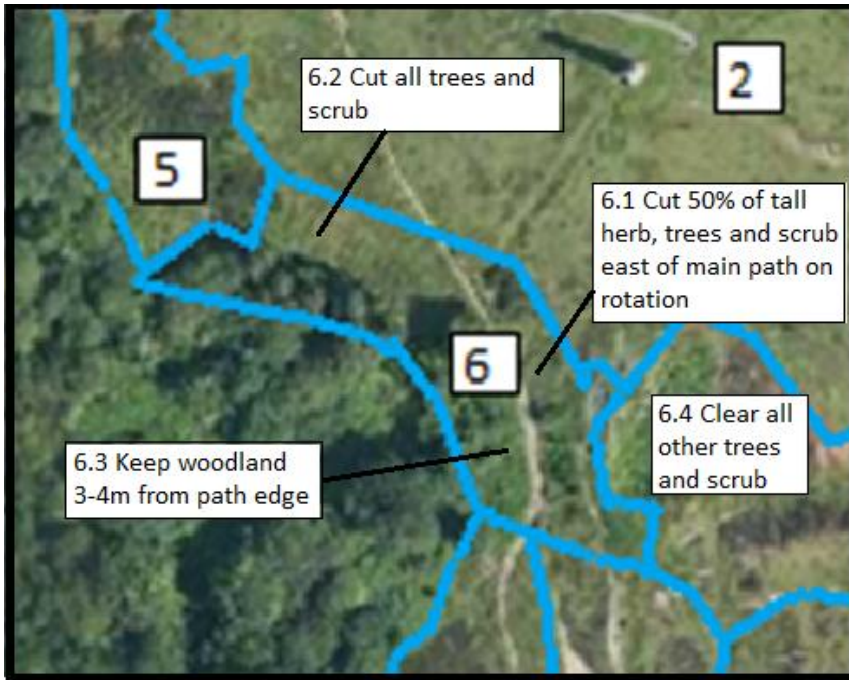
Map 2: Compartment 2 Management Proposals



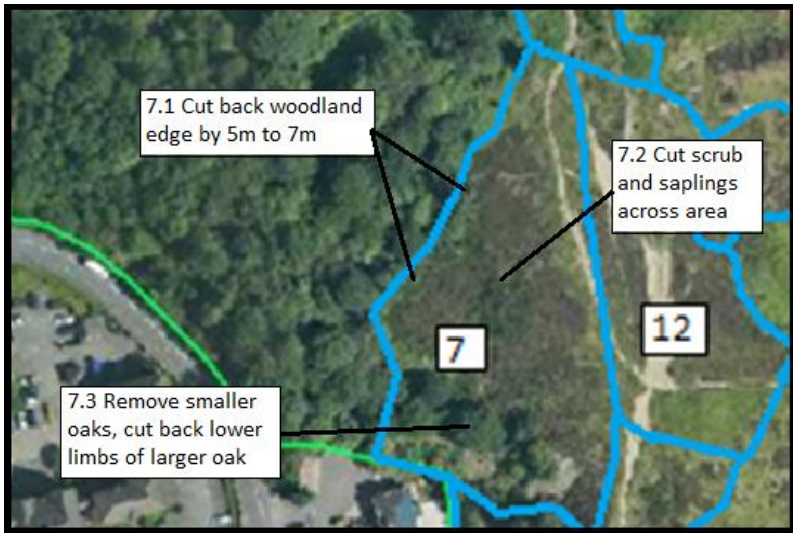
Map 3: Compartment 3 Management Proposals



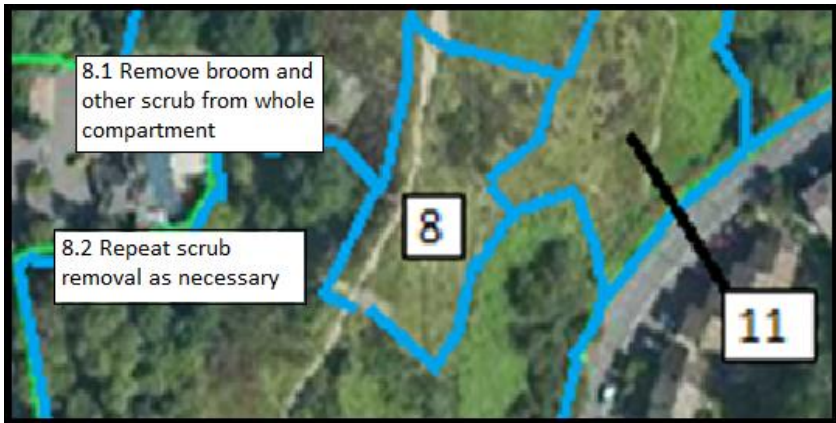
Map 4: Compartments 4 & 5 Management Proposals



Map 5: Compartment 6 Management Proposals



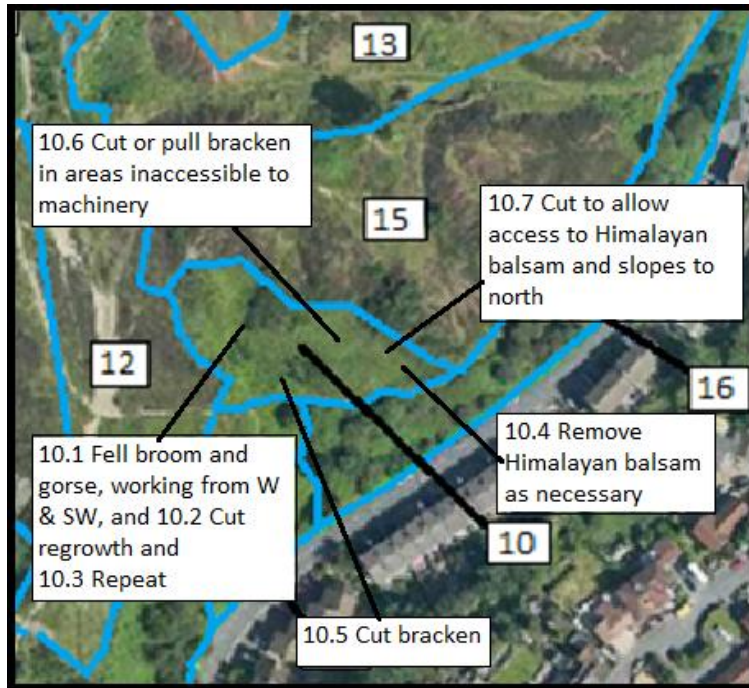
Map 6: Compartment 7 Management Proposals



Map 7: Compartment 8 Management Proposals



Map 8: Compartment 9 Management Proposals



Map 9: Compartment 10 Management Proposals

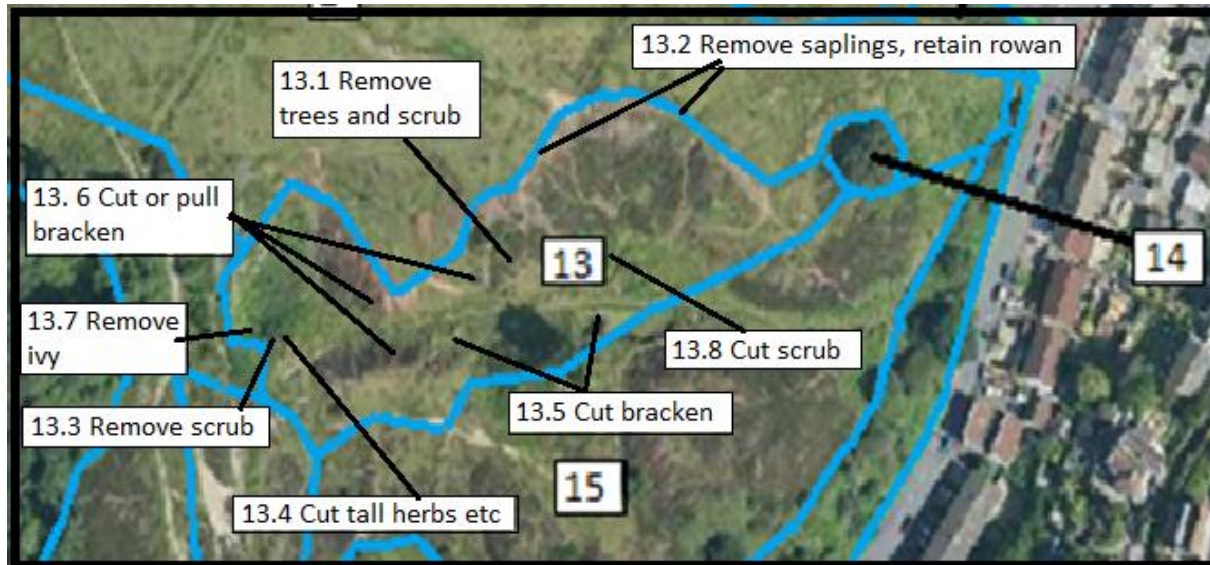


Map 10: Compartment 11 Management Proposals

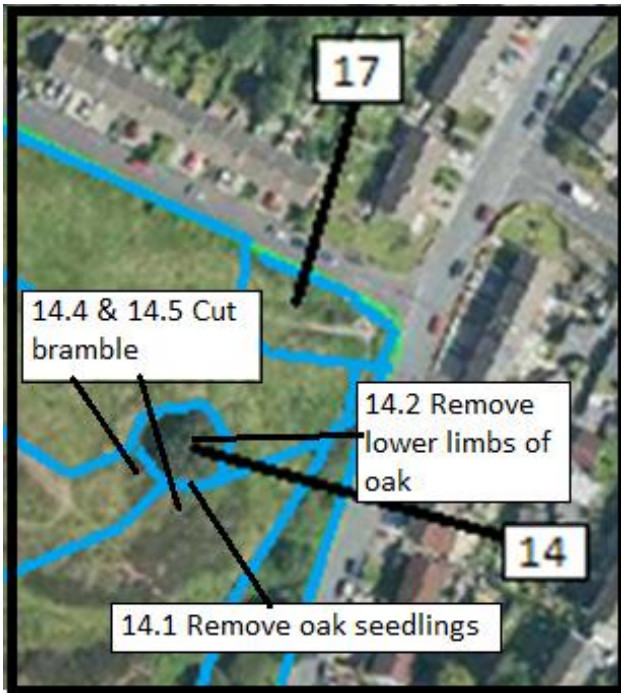




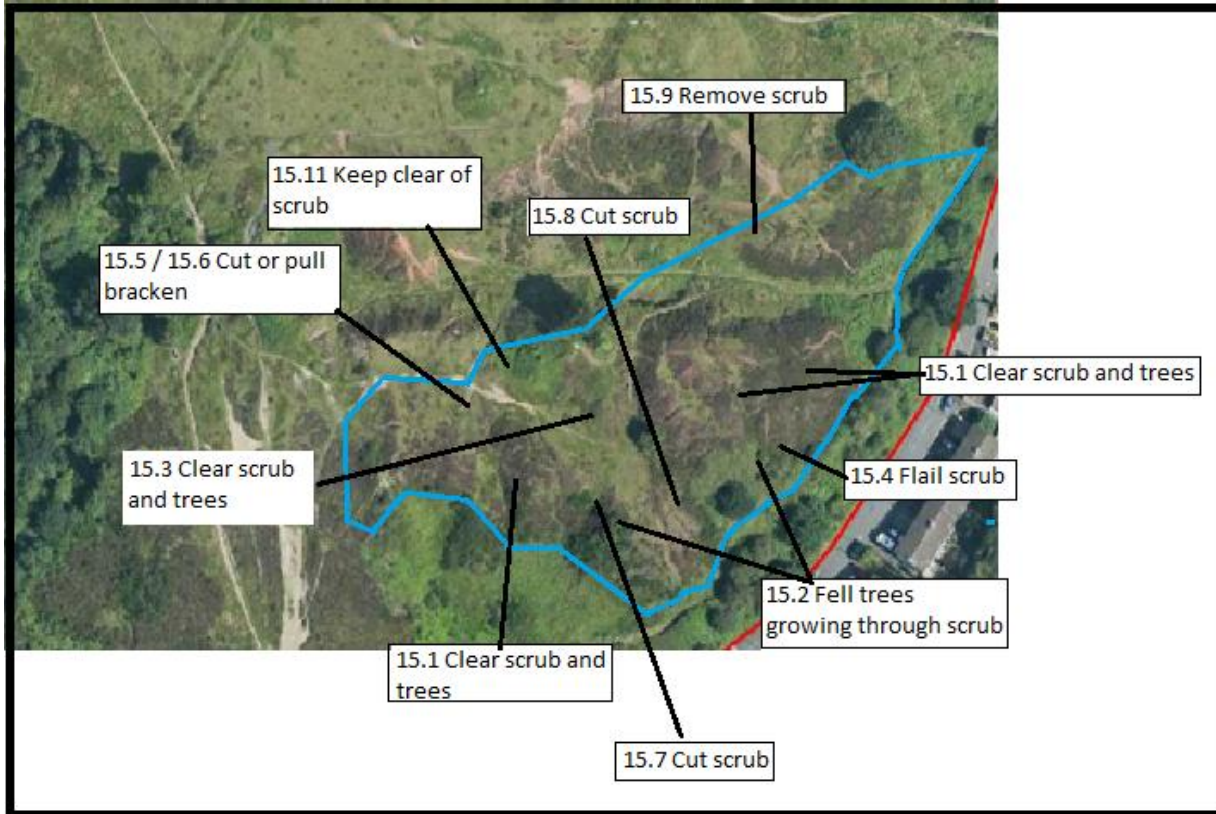
Map 11: Compartment 12 Management Proposals



Map 12: Compartment 13 Management Proposals



Map 13: Compartment 14 Management Proposals



Map 14: Compartment 15 Management Proposals



Map 15: Compartment 17 Management Proposals

**Revision History**

Date	Compartment	Reason	Updated by
8/12/20	14	In May the large oak near the Greendown entrance collapsed (see <a href="http://www.troopers-hill.org.uk/plan.htm#Oak">http://www.troopers-hill.org.uk/plan.htm#Oak</a> ) This led to a change in the management needed in this area. This approach was discussed and agreed with conservation officer, Becky Belfin, on 4/11/20 and confirmed by email on 5/11/20	Susan Acton-Campbell
8/12/20	11.4	Control of bracken is improving this compartment. Grasses and wildflowers are re-established. Bramble and tree seedlings are starting to appear. Agreed with Becky Belfin as above.	Susan Acton-Campbell
8/12/20	A8	Remove holm oak where easily accessible to prevent development to produce acorns and increase spread via jays of holm oak seedlings	Susan Acton-Campbell